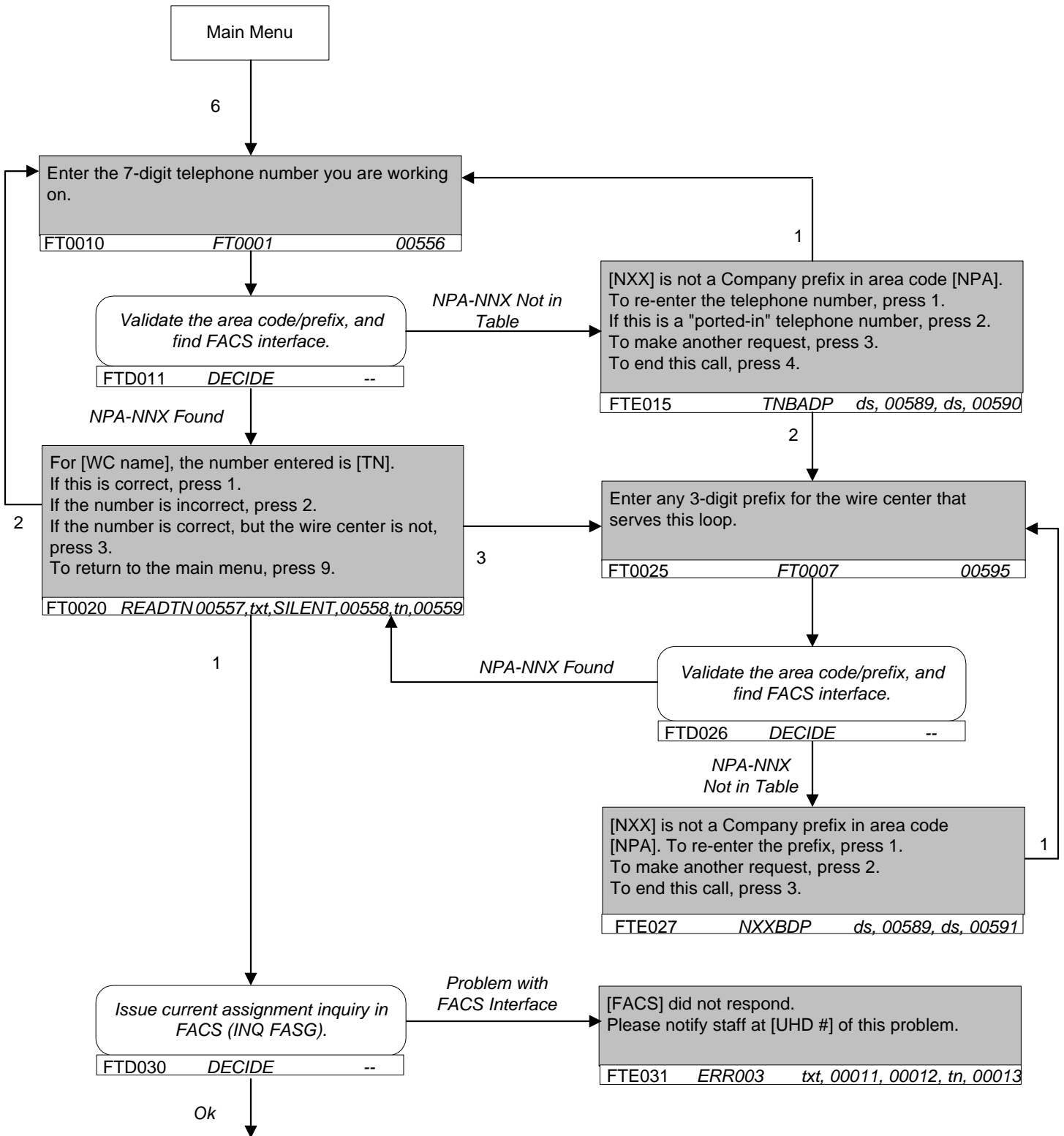
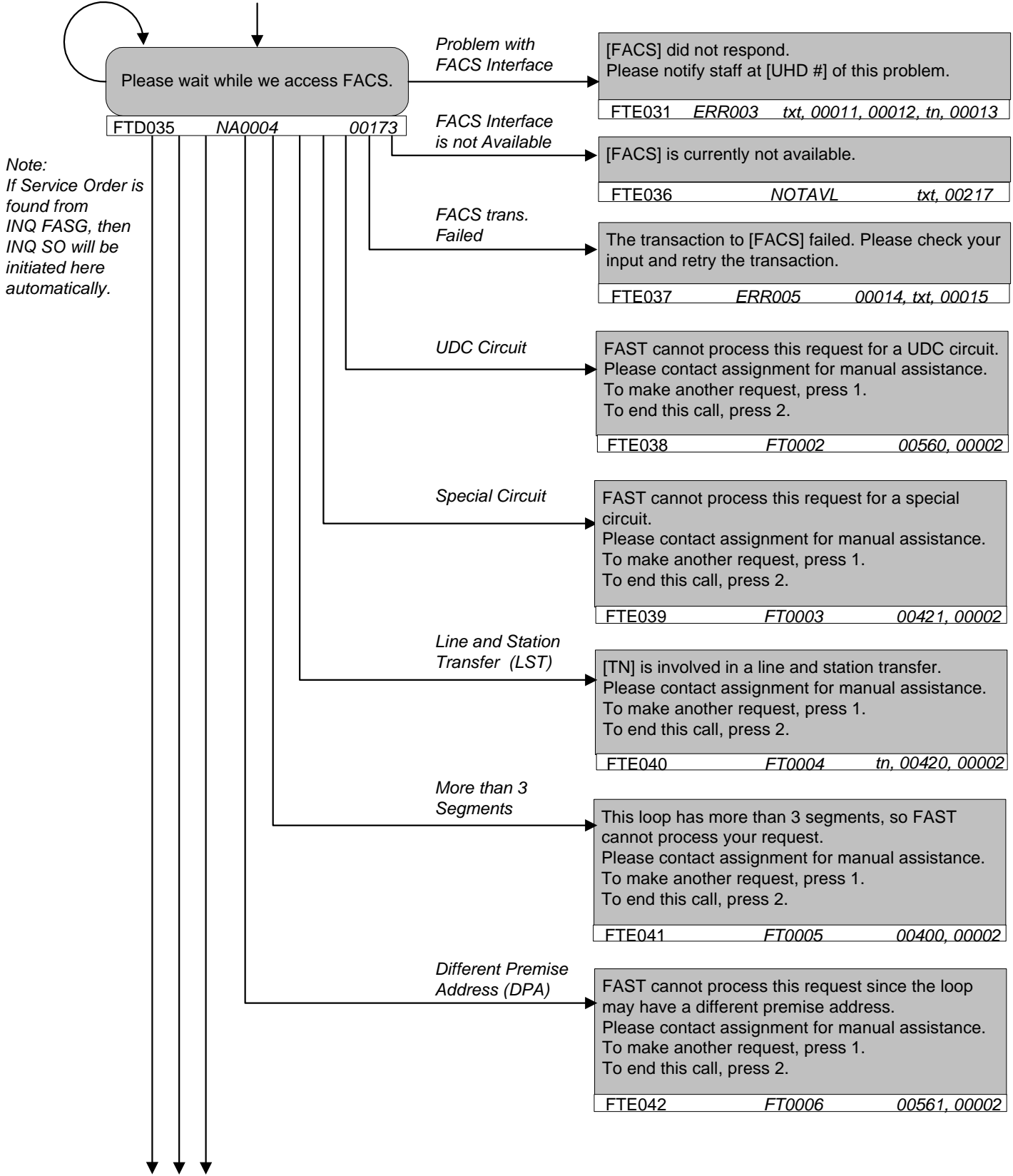
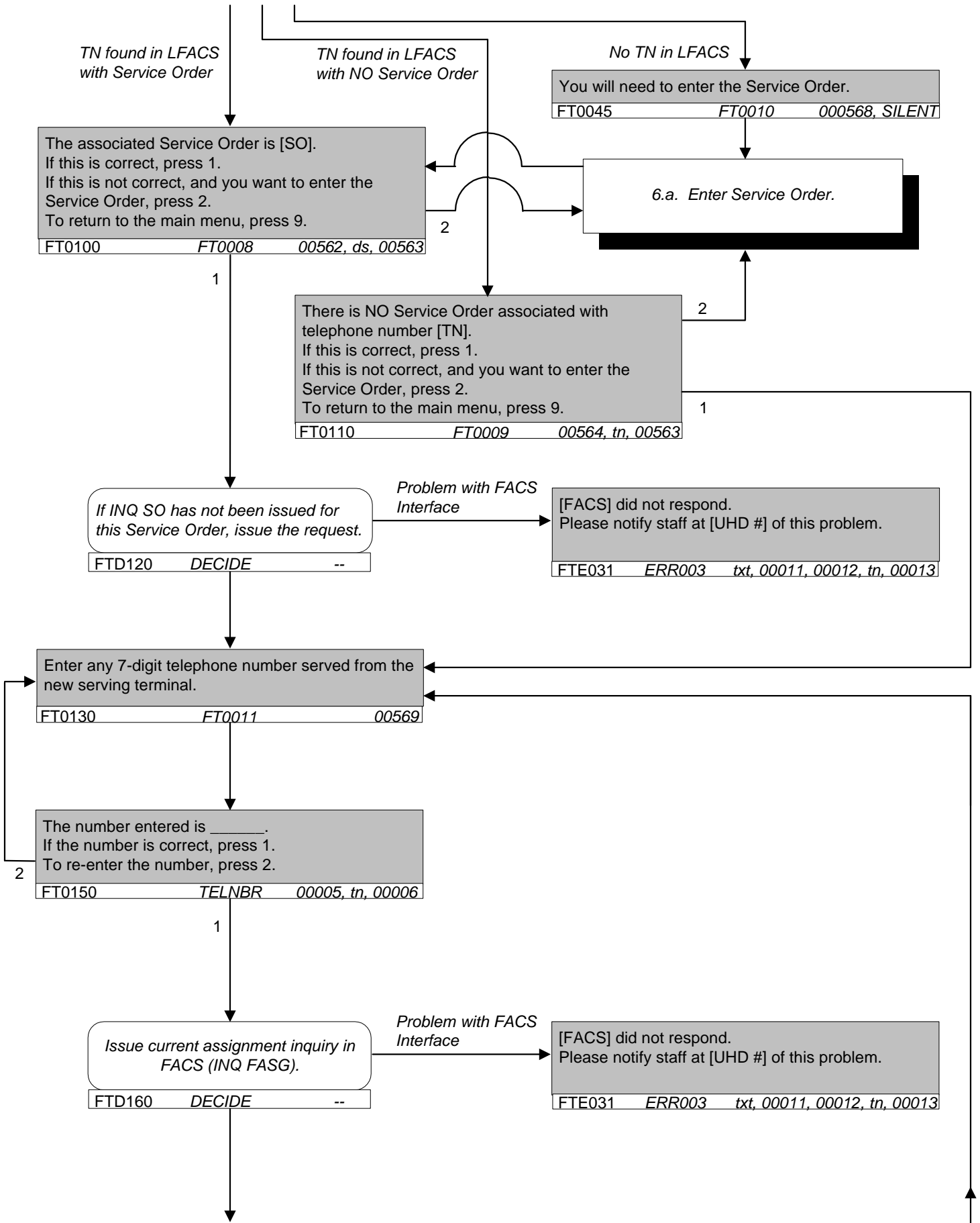


# 6. Change or Assign a New Serving Terminal :



Max. 10 waits  
= approx 5 mins





TN found in LFACTS with Service Order

TN found in LFACTS with NO Service Order

No TN in LFACTS

The associated Service Order is [SO].  
If this is correct, press 1.  
If this is not correct, and you want to enter the Service Order, press 2.  
To return to the main menu, press 9.

FT0100 FT0008 00562, ds, 00563

You will need to enter the Service Order.  
FT0045 FT0010 000568, SILENT

6.a. Enter Service Order.

There is NO Service Order associated with telephone number [TN].  
If this is correct, press 1.  
If this is not correct, and you want to enter the Service Order, press 2.  
To return to the main menu, press 9.

FT0110 FT0009 00564, tn, 00563

If INQ SO has not been issued for this Service Order, issue the request.  
FTD120 DECIDE --

Problem with FACS Interface

[FACS] did not respond.  
Please notify staff at [UHD #] of this problem.  
FTE031 ERR003 txt, 00011, 00012, tn, 00013

Enter any 7-digit telephone number served from the new serving terminal.  
FT0130 FT0011 00569

The number entered is \_\_\_\_\_.  
If the number is correct, press 1.  
To re-enter the number, press 2.  
FT0150 TELNBR 00005, tn, 00006

Issue current assignment inquiry in FACS (INQ FASG).  
FTD160 DECIDE --

Problem with FACS Interface

[FACS] did not respond.  
Please notify staff at [UHD #] of this problem.  
FTE031 ERR003 txt, 00011, 00012, tn, 00013

Max. 10 waits  
= approx 5 mins

