

9.3 Display Adapters and Drivers

The following display adapters are supported:

- ◆ NVIDIA NVS 420
- ◆ NVIDIA NVS 510

Verify that you have the latest driver for your NVIDIA graphics card as shown in the following table:

Figure 9–3 NVIDIA Cards and Drivers

Video Card	Driver Version	Driver Date	Link to Driver
Rev 1 Windows 7	NVS 420 R340 U15 (342.01)	2016.12.14	http://www.nvidia.com/download/driverResults.aspx/112589/en-us
Rev 2-7 Windows 7	NVS 510 R384 U5 (385.90)	2017.11.6	http://www.nvidia.com/download/driverResults.aspx/126786/en-us
Rev 2-7 Windows 10	NVS 510 R384 U5 (385.90)	2017.11.6	http://www.nvidia.com/download/driverResults.aspx/126788/en-us

9. Product Computer Hardware

Display Adapters and Drivers

To verify which display adapter and driver are installed:

→ **Windows 7 or Windows 10 computer**

- 1 Check prerequisites:
 - ✓ None
- 2 Open the Device Manager:
 - a Windows 7:
 - 1) Click **Windows Start** → **Computer**.
 - 2) Click **System Properties** → **Device Manager**. The **Device Manager** window opens.
 - b Windows 10: Right-click **Windows Start** and then click **Device Manager**.
- 3 Click **Yes** at the security prompt.
- 4 Click the triangle next to **Display adapters** to expand it. One of the supported cards should be listed as shown in the following figure:

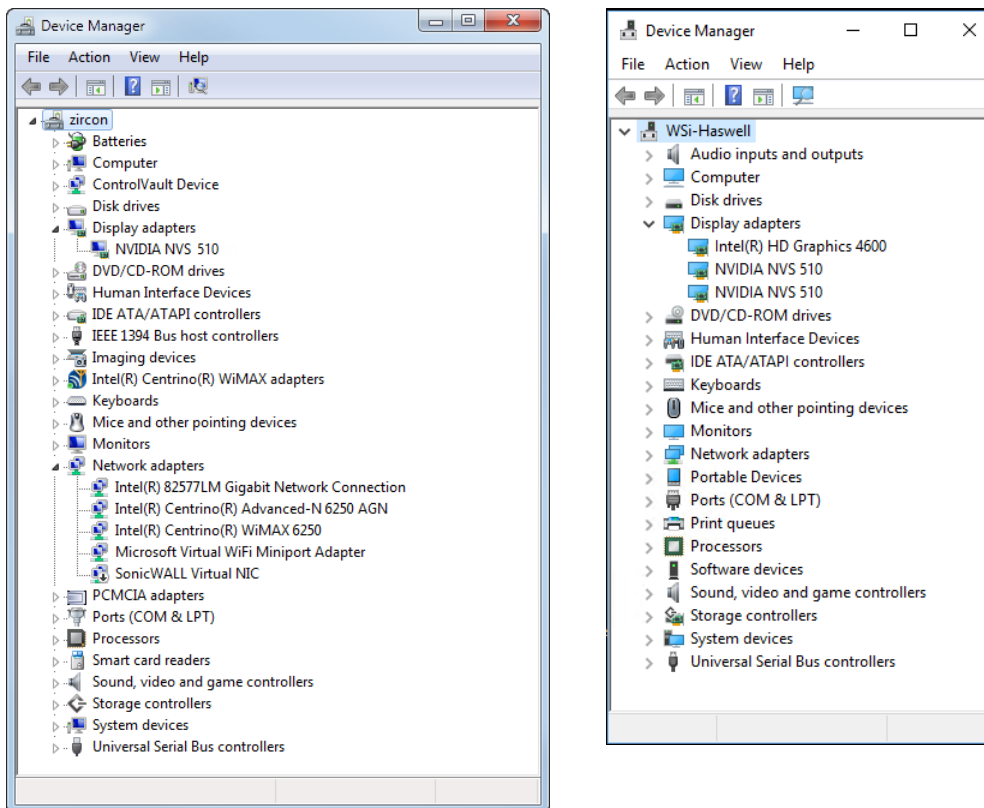


Figure 9–4 NVIDIA Display Adapters

- 5 Right-click on the driver name, and then select **Properties**.
- 6 Click the **Driver** tab. The **Driver Date** and **Driver Version** are displayed.

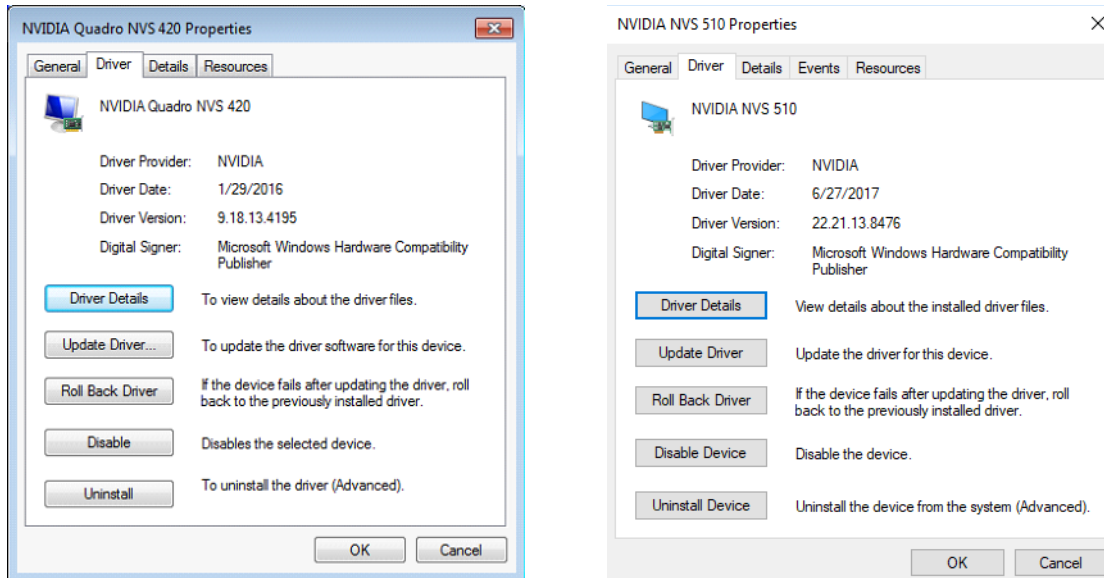


Figure 9–5 NVIDIA Driver Properties

9.4 Using Multiple Monitors

The Company Name supplied desktop and rack-mount computers will accommodate up to six monitors:

- ◆ One graphics card – Up to four monitors
- ◆ Two graphics cards – Up to six monitors

See the following sections for instructions:

- ◆ "Windows 7" on page 99
- ◆ "Windows 10" on page 101

9.4.1 Windows 7

This section describes how to configure multiple monitors in Windows 7.

To configure or reconfigure your monitors in Windows 7:

→ **Windows 7 computer**

- 1 Check prerequisites:
 - ✓ None
- 2 Right-click on the desktop and then select **Personalize**.
- 3 In the left pane, click **Display**.
- 4 In the left pane, click **Change display settings**.

9. Product Computer Hardware

Using Multiple Monitors

- 5 The number of monitors your graphics card can support are displayed. The following figure shows a four-display configuration:

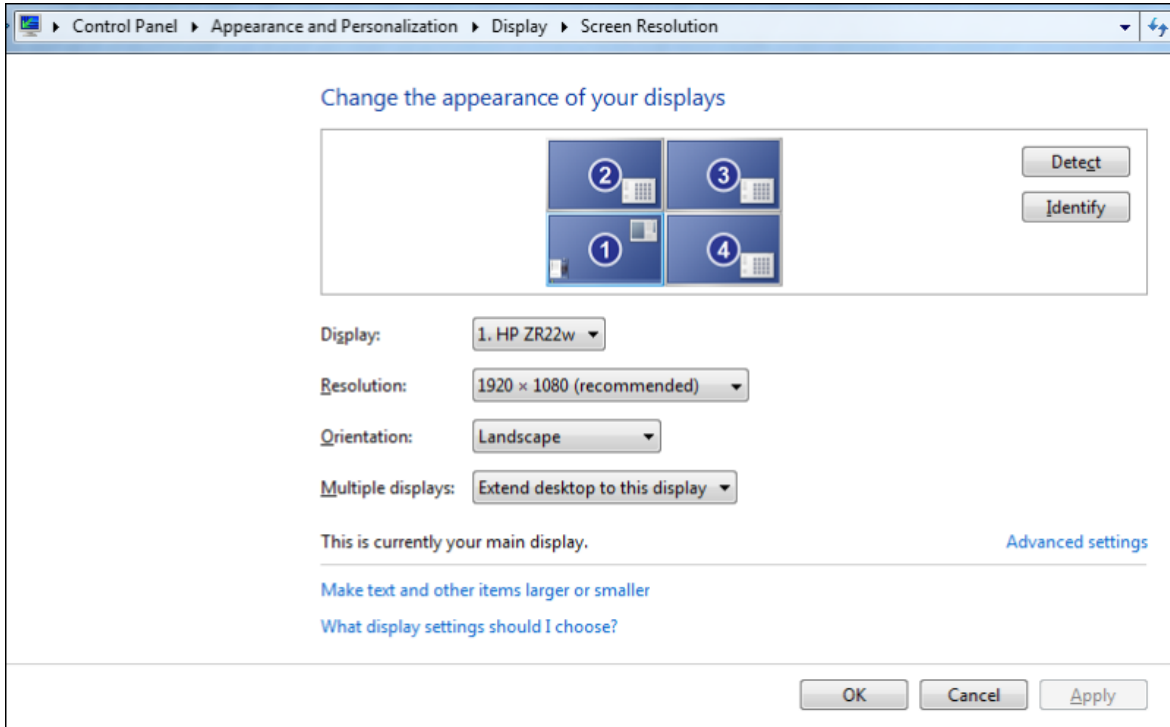


Figure 9–6 Control Panel, Displays

- 6 Click **Identify** to see the number associated with each of your physical monitors.
- 7 Click **Make this my main display** for one of the monitors.
- 8 Verify that the cursor moves between the monitors as shown in the following figure:



Figure 9–7 Four-Monitor Cursor Movement

**TIP**

Click a monitor icon in the Control Panel window to select it.

Click and drag a monitor icon in the Control Panel window to move it.

You may need to rearrange the physical plugs between the computer and the monitor if you cannot get the configuration you want.

The Product system associates the user interface windows with the monitor numbers. The Product Default Layout feature expects the monitor layout shown above; where the home window is displayed in Monitor 1.

- *To save a different layout, create a custom layout and then click Layout → Save Layout.*
- *To load a different layout, click Layout → Load Layout to open custom views.*
- *To identify the monitor number, refer to the previous instructions.*

9.4.2 Windows 10

This section describes how to configure multiple monitors in Windows 10.

To configure or reconfigure your monitors in Windows 10:

→ **Windows 10 computer**

- 1 Check prerequisites:
 - ✓ None
- 2 In the Windows search box, type **disp** and then click **Change display settings**. The **Display Settings** window opens.

9. Product Computer Hardware

Using Multiple Monitors

- The number of monitors your graphics card can support are displayed. The following figure shows a four-display configuration:

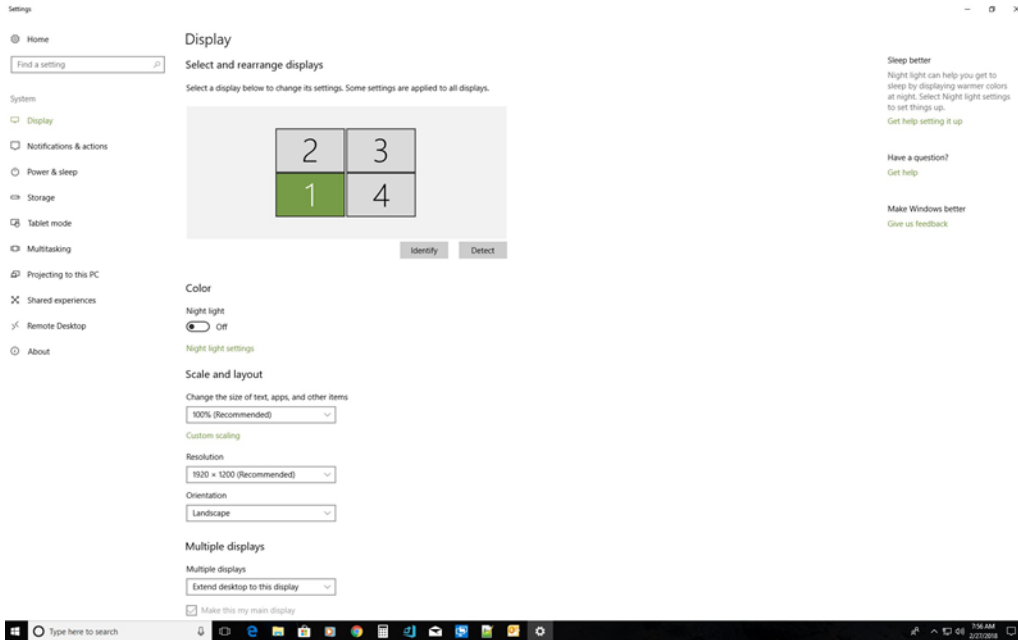


Figure 9–8 Control Panel – Displays

- Click **Identify** to see the number associated with each of your physical monitors.
- In the **Multiple Displays** area, click **Extend these displays**.
- In the **Multiple Displays** area, click **Make this my main display** for the number one monitor.
- Verify that the cursor moves between the monitors as shown in the following figure:

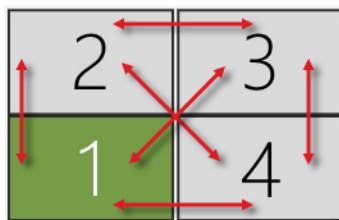


Figure 9–9 Four-Monitor Cursor Movement



TIP

Click a monitor icon in the Control Panel window to select it.

Click and drag a monitor icon in the Control Panel window to move it.

You may need to rearrange the physical plugs between the computer and the monitor if you cannot get the configuration you want.

The Product system associates the user interface windows with the monitor numbers. The Product Default Layout feature expects the monitor layout shown above; where the home window is displayed in Monitor 1.

- To save a different layout, create a custom layout and then click Layout → Save Layout.
- To load a different layout, click Layout → Load Layout to open custom views.
- To identify the monitor number, refer to the previous instructions.

9.5 Installing a Plotter

This section describes how to install the *iSys Group v12 Direct Thermal Printer* plotter on a computer running the Microsoft Windows 7 or Microsoft Windows 10, 64-bit operating system.

9.5.1 Install the Hardware

This section describes how to set up the plotter.

To install the plotter:

→ **Windows 7 or Windows 10 computer**

1 Check prerequisites:

- ✓ All of the plotter parts are available
- ✓ An Ethernet cable is available
- ✓ A computer with an Ethernet port is available
- ✓ An AC power outlet is available
- ✓ The V12 User Guide is available
(<http://www.isys-group.com/s/V12-User-Guide-web.pdf>)